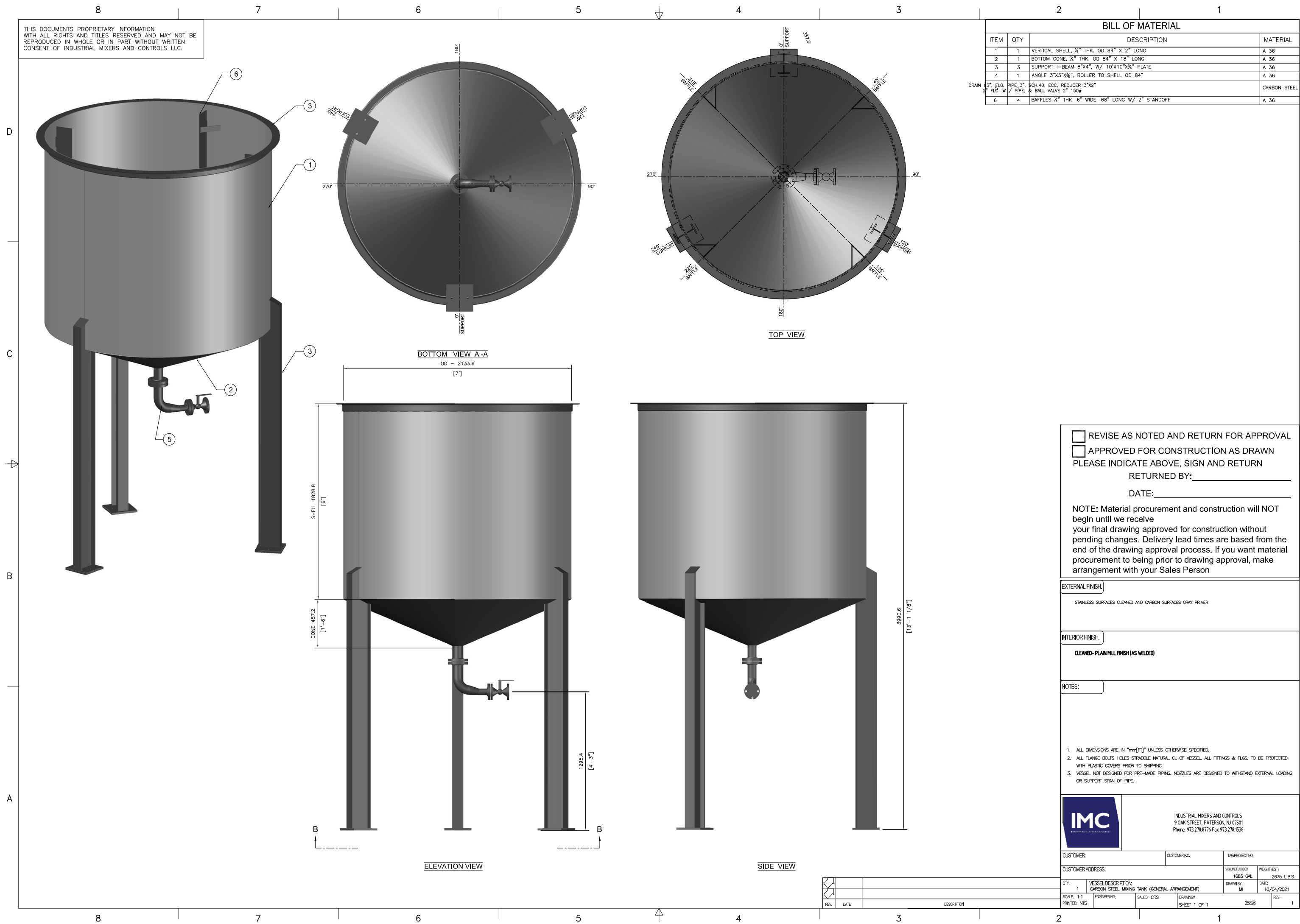


THIS DOCUMENTS PROPRIETARY INFORMATION WITH ALL RIGHTS AND TITLES RESERVED AND MAY NOT BE REPRODUCED IN WHOLE OR IN PART WITHOUT WRITTEN CONSENT OF INDUSTRIAL MIXERS AND CONTROLS LLC.

BILL OF MATERIAL				
ITEM	QTY	DESCRIPTION	MATERIAL	
1	1	VERTICAL SHELL, 1/2" THK. OD 84" X 2" LONG	A 36	
2	1	BOTTOM CONE, 1/2" THK. OD 84" X 18" LONG	A 36	
3	3	SUPPORT I-BEAM 8"x4", W/ 10"x10"x3/4" PLATE	A 36	
4	1	ANGLE 3"x3"x3/8", ROLLER TO SHELL OD 84"	A 36	
DRAIN 3/4" ELG. PIPE, 3" SCH.40, ECC. REDUCER 3"x2" 2" FLG. W / PIPE, & BALL VALVE 2" 150#			CARBON STEEL	
6	4	BAFFLES 1/2" THK. 6" WIDE, 68" LONG W/ 2" STANDOFF	A 36	



REVISE AS NOTED AND RETURN FOR APPROVAL
 APPROVED FOR CONSTRUCTION AS DRAWN
 PLEASE INDICATE ABOVE, SIGN AND RETURN
 RETURNED BY: _____
 DATE: _____

NOTE: Material procurement and construction will NOT begin until we receive approved for construction without pending changes. Delivery lead times are based from the end of the drawing approval process. If you want material procurement to be prior to drawing approval, make arrangement with your Sales Person

EXTERNAL FINISH:
 STAINLESS SURFACES CLEANED AND CARBON SURFACES GRAY PRIMER

INTERIOR FINISH:
 CLEANED-PLAN MILL FINISH (AS WELDED)

- NOTES:**
- ALL DIMENSIONS ARE IN "mm[FT]" UNLESS OTHERWISE SPECIFIED.
 - ALL FLANGE BOLTS HOLES STRADDLE NATURAL CL OF VESSEL. ALL FITTINGS & FLOS. TO BE PROTECTED WITH PLASTIC COVERS PRIOR TO SHIPPING.
 - VESSEL NOT DESIGNED FOR PRE-MADE PIPING. NOZZLES ARE DESIGNED TO WITHSTAND EXTERNAL LOADING OR SUPPORT SPAN OF PIPE.

IMC INDUSTRIAL MIXERS AND CONTROLS
 9 OAK STREET, PATERSON NJ 07501
 Phone: 973.278.8776 Fax 973.278.1538

CUSTOMER:	CUSTOMER P.O.:	TAG/PROJECT NO.:
CUSTOMER ADDRESS:		VOLUME ORDERED: 1685 GAL
		WEIGHT (EST): 2675 LBS
QTY: 1	VESSEL DESCRIPTION: CARBON STEEL MIXING TANK (GENERAL ARRANGEMENT)	DRAWN BY: MI
SCALE: 1:1	ENGINEERING:	DATE: 10/04/2021
PRINTED: NTS	SALES: CRS	SHEET 1 OF 1

REV.	DATE	DESCRIPTION