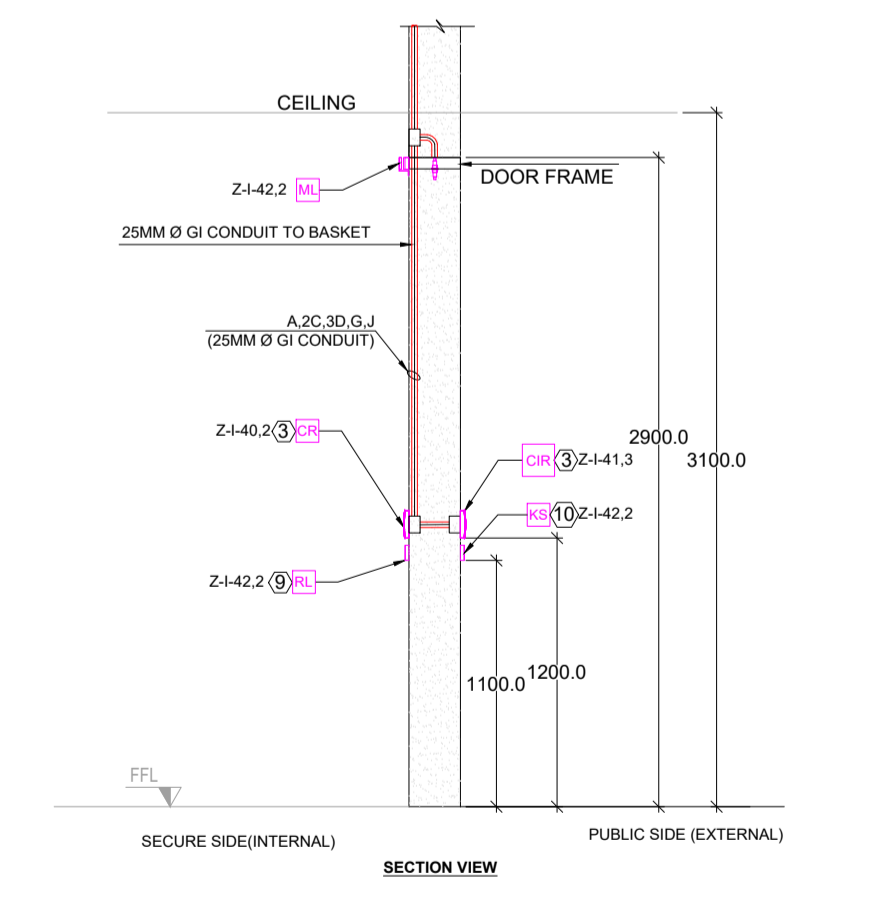
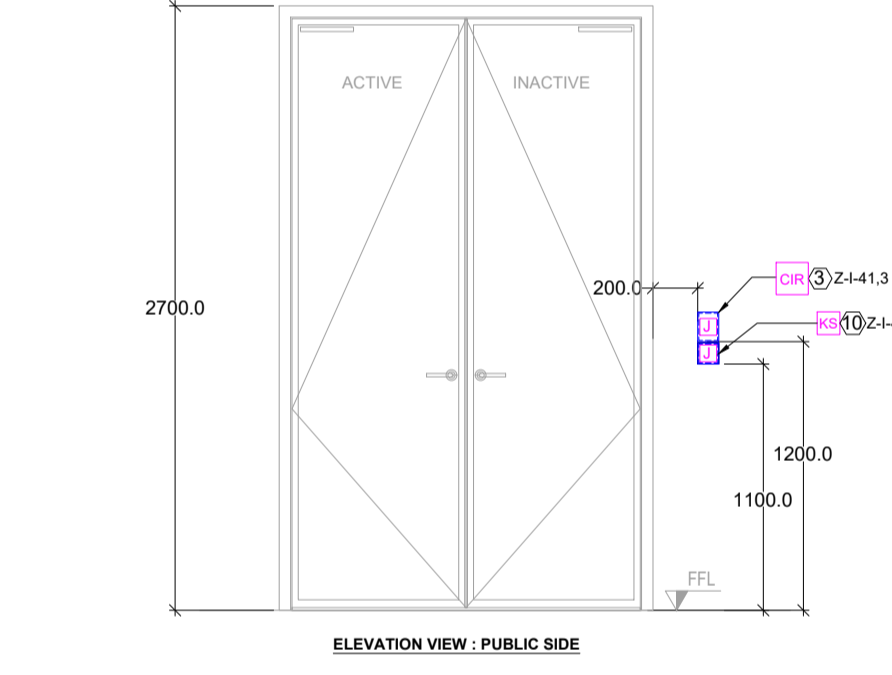
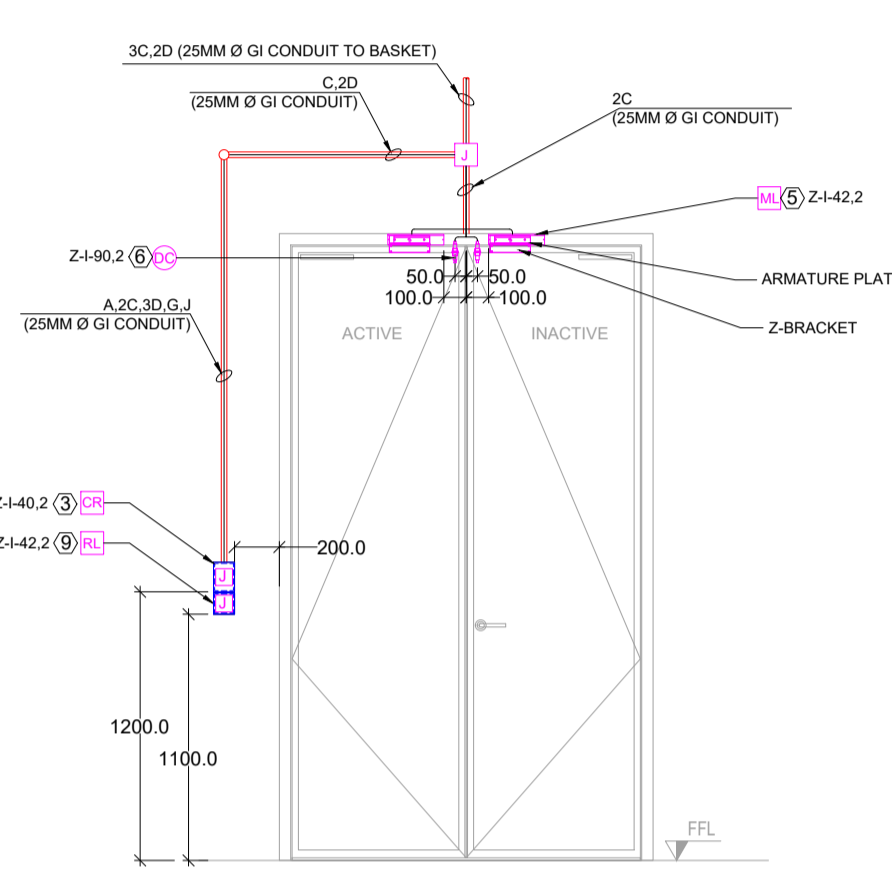
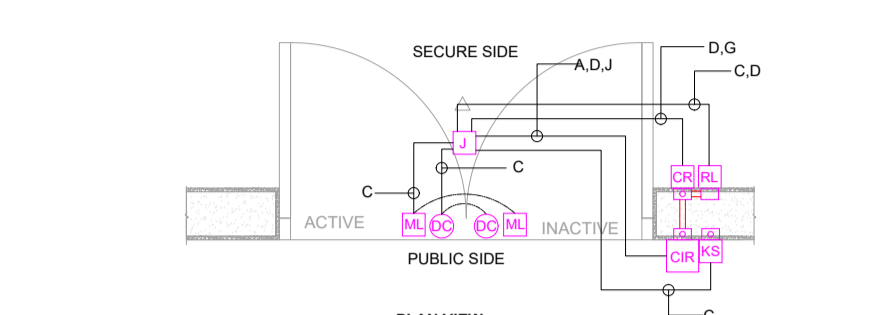
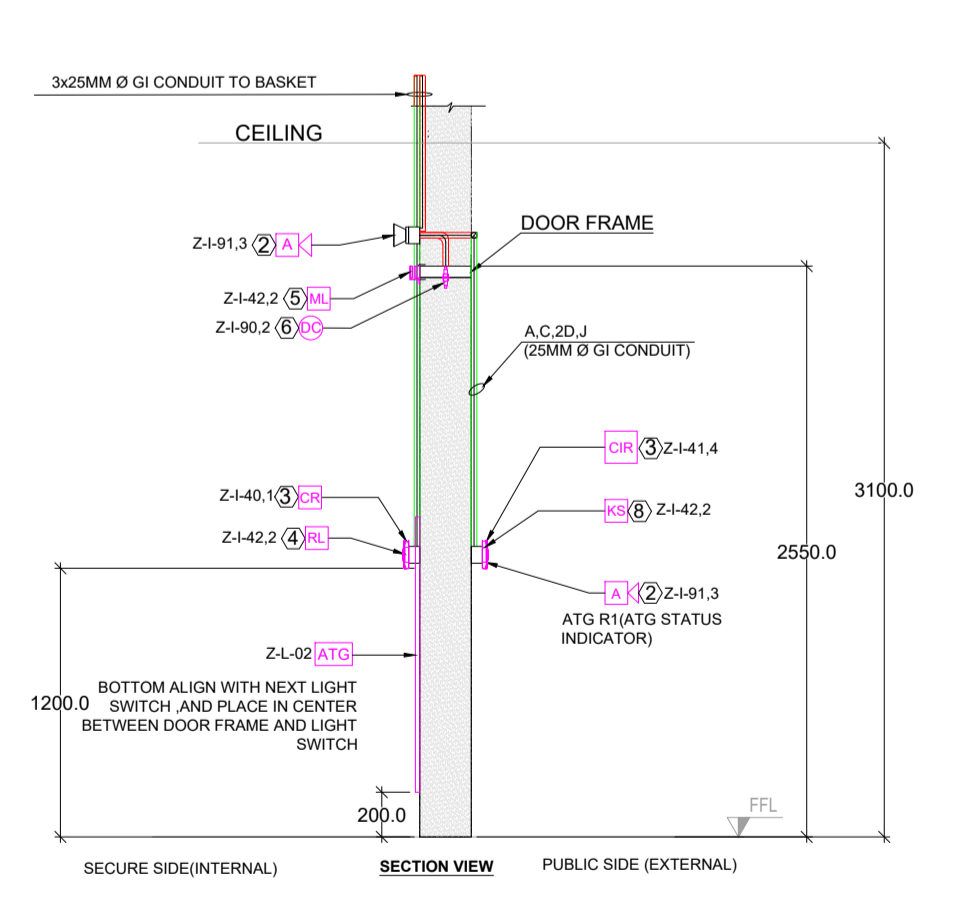
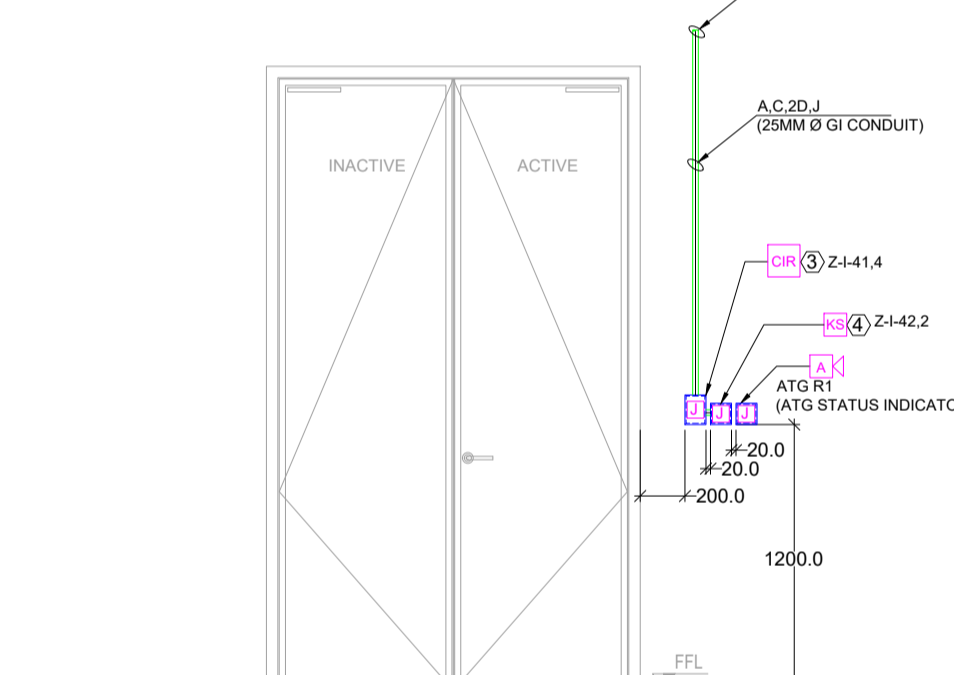
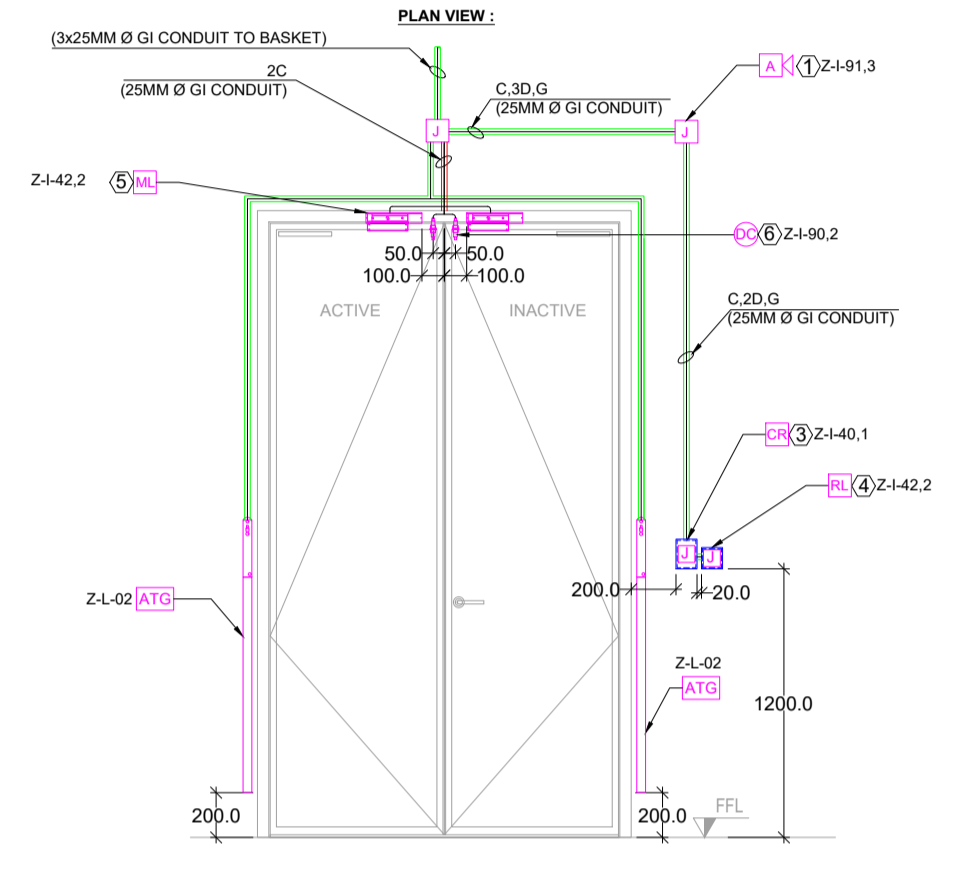
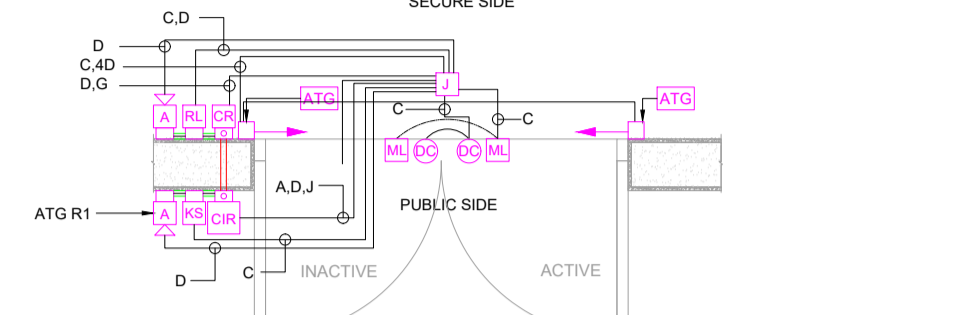


1 SECURITY XXXX
SCALE: 1:30



2 SECURITY XXXX
SCALE: 1:30



3 SECURITY XXXX
SCALE: 1:30

DEVICE LEGEND (FOR EXISTING)

	EMERGENCY DOOR RELEASE
	MAGNETIC LOCK
	DOOR CONTACT
	PANIC BAR

DEVICE LEGEND

	CARD READER
	EMERGENCY DOOR RELEASE
	MAGNETIC LOCK
	CARDIRIS READER
	FLUSH MOUNT DOOR CONTACT
	SURFACE MOUNT DOOR CONTACT
	ALARM SOUNDER
	JUNCTION BOX
	REX
	ANTI-TAILGATING
	KEY SWITCH OVERRIDE
	CONCEALED CONDUIT
	SURFACE MOUNT CONDUIT
	SURFACE MOUNTED PVC CABLE CAP

DEVICE LEGEND

	CARD READER
	DOOR CONTACT
	TAMPER SWITCH
	FIRE ALARM SYSTEM MONITORING

NOTE: LOCK USED IS KS200

KEYED NOTES (K)

- MOUNT ONE 100mm SQUARE BOX WITH SINGLE GANG EXTENSION RING SURFACE MOUNTED ON FINISHED WALL SURFACE. PROVIDE BOX WITH SOLID BLANK COVER AND TAMPER RESISTANT FASTENERS.
- MOUNT THE 75*75MM JUNCTION BOX FLUSHED IN SURFACE WALL 300MM HEIGHT FROM TOP OF DOOR FRAME & COVERED WITH MS METAL PLATE WITH TAMPER RESISTANT FASTENER.
- MOUNT THE 75*75MM JUNCTION BOX FLUSHED IN SURFACE WALL ORIENTED VERTICALLY FOR CARD READER AT 1200 MM FROM FINISHED FLOOR.
- MOUNT THE 75*75MM JUNCTION BOX FLUSHED IN SURFACE WALL ORIENTED HORIZONTALLY FOR EMERGENCY RELEASE SWITCH AT 1200MM FROM FINISHED FLOOR.
- INSTALL THE 1200 LBS MAGLOCK 100MM DISTANCE FROM THE DOOR FRAME.
- MOUNT THE FLUSH MOUNT DOOR CONTACT 50MM DISTANCE FROM THE DOOR FRAME & MAGNET ON THE DOOR LEAF
- EMI SHIELD TO BE PROVISIONED FOR CARD READERS WHICH ARE INSTALLED BACK-TO-BACK WITHIN A COMMON WALL AND APPROPRIATELY GROUNDED BETWEEN THE DEVICE
- MOUNT THE 75*75MM JUNCTION BOX FLUSHED IN SURFACE WALL ORIENTED HORIZONTALLY FOR KEY OVERRIDE SWITCH AT 1200MM FROM FINISHED FLOOR.
- MOUNT THE 75*75MM JUNCTION BOX FLUSHED IN SURFACE WALL ORIENTED HORIZONTALLY FOR EMERGENCY RELEASE SWITCH AT 1100MM FROM FINISHED FLOOR.
- MOUNT THE 75*75MM JUNCTION BOX FLUSHED IN SURFACE WALL ORIENTED HORIZONTALLY FOR KEY OVERRIDE SWITCH AT 1100MM FROM FINISHED FLOOR.

SECURITY NOTES:

- SECURITY EQUIPMENT PROVIDED AND INSTALLED BY THE SECURITY CONTRACTOR UNLESS OTHERWISE NOTED.
- CONTACT THE SECURITY DESIGNER IF ANY EQUIPMENT CANNOT BE MOUNTED WITHIN DISTANCES AND TOLERANCES SPECIFIED.
- TERMINATE SHIELDED DRAIN WIRES AT THE PANEL SIDE ONLY.
- USE END OF LINE (EOL) SUPERVISION RESISTORS AT ALL DOOR CONTACTS. REQUEST TO EXITS, ALARM DEVICES AND OTHER MONITORED POINTS.
- MINIMIZE ALL SPLICES IN CABLES, BUT WHERE REQUIRED USE NYLON CRIMP CONNECTORS AND PROTECT SPLICE WITH PROTECTIVE SHRINK TUBE COVER.
- FOR SURFACE MOUNT CONTACTS, AN ARMORED CABLE IS ACCEPTABLE UP TO 450mm BEFORE CONNECTING TO AN ELECTRICAL BOX.

CABLE LEGEND

CABLE ID	DESCRIPTION	PLENUM (CL2P)
A	18 AWG, 6 C, SHIELDED, STRANDED	BELDEN #8304FE
B	22 AWG, 4 C, SHIELDED, STRANDED	BELDEN #8502FE
C	22 AWG, 2 C, SHIELDED, STRANDED	BELDEN #8500FE
D	18 AWG, 2 C, UNSHIELDED, STRANDED	BELDEN #8200UE
E	18 AWG, 2 C, UNSHIELDED, STRANDED	BELDEN #8300UE
F	14 AWG, 2 C, UNSHIELDED, STRANDED	BELDEN #8100UE
G	24 AWG 2-PAIR OR 22 AWG 1-PAIR+GROUND, SHIELDED, STRANDED, TWISTED	BELDEN #82842
J	CAT 6, 23 AWG, 4-PAIR, SOLID, UTP	COMMSCOPE #70029101
P	FIBER OPTIC CABLE	SEE TELECOM